

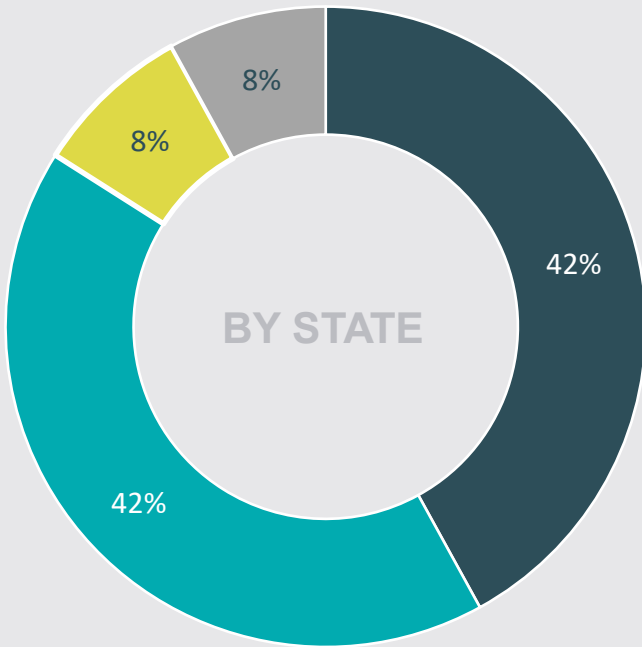


Our Community by the Numbers (As of 12/31/22)

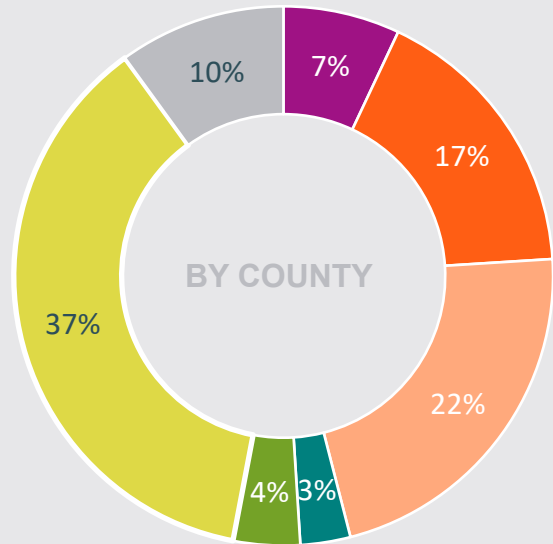


2,044

People with Down syndrome in our Database



■ KS ■ MO ■ Other ■ Unidentified



■ Clay ■ Jackson ■ Johnson
 ■ Shawnee ■ Wyandotte ■ Other
 ■ Unidentified

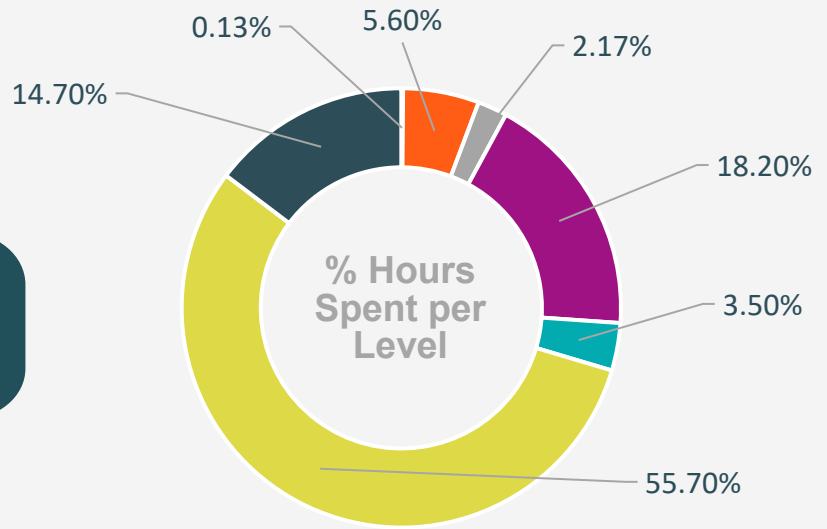




Engagement by the Numbers (As of 12/31/22)



26,536 Hours
Serving People with Down Syndrome



Level 1
Data Collection & Assessment

Level 2
Event or Seminar Attendance

Level 3
Intake or Consultation

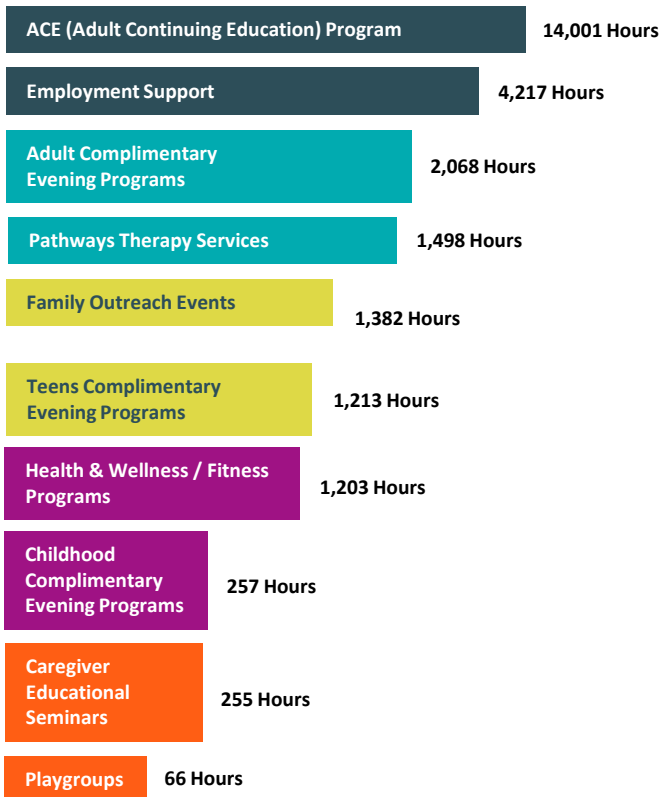
Level 4
Age-Level Group Programs

Level 5
Therapy Group or Evaluation

Level 6
Direct Therapy or Adult Day Services

Level 7
Employment or Job Coaching

Engagement: Top 10 Programs (As of 12/31/22)



FY 2022 Outcomes

We served **840 FAMILIES** at a Level 2 or greater

We served **513 FAMILIES** at a Level 3 or greater



2022 Goal:
Serve **700 Families**